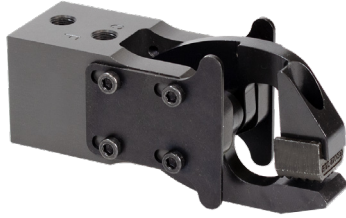


# WHAT'S NEW: SERIES GRM CLAMPS

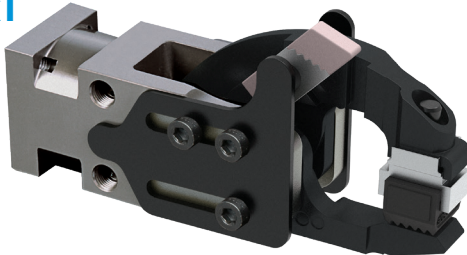
## SERIES GRM JAW STYLES T & U - LOW PROFILE SHOVELS

### Jaw Style 'T' - Single Shovel

Size 1  
GRM1xT



Size 2  
GRM2xT

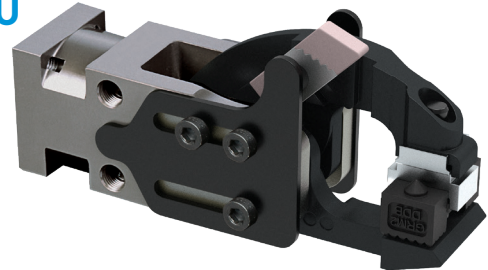


### Jaw Style 'U' - Double Shovel

Size 1  
GRM1xU



Size 2  
GRM2xU



#### Jaw Design Benefits

- Jaws lock in closed position
- Upper jaw accepts standard and custom tooling
- Low profile lower shovel jaw fits in tight spaces for blank loading
- More compact than Styles H & J Shovel Jaws
- Lower jaw rotation is also available
- Adjustable external rotation stop allows for multiple jaw openings in one clamp (size 2 only)

See catalog for details

## SERIES GRM2 - TEACHABLE PANEL PRESENT DETECTION

### -Uxxxx Option

- Option provides push button teachable sensor to detect presence of part.
- Position of internal target relates directly to jaw position and thickness of material being gripped.
- Ideal choice for backup or redundant signaling detection.
- Cordset replaceable without having to remove or replace sensor.
- Drop-in retrofittable for -Pxxxx Panel Present Switch option
- Option functions within a wide range of material thicknesses 0.020 to 0.197 in [0.5 to 5.0 mm]
- Available on all 15 jaw styles.



*Teach Sensor option provides fast and easy setup.*

See catalog for details

6/25 11899